



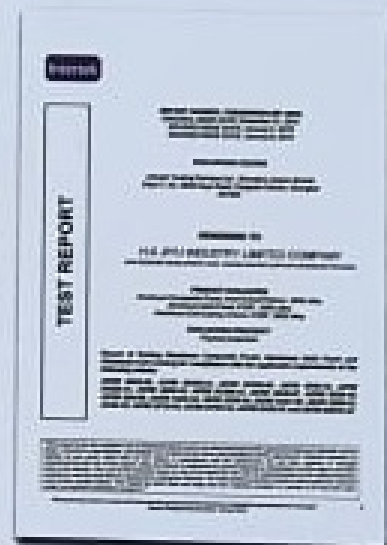
COLOR CHART OF JIYU ALUMINUM COMPOSITE PANEL

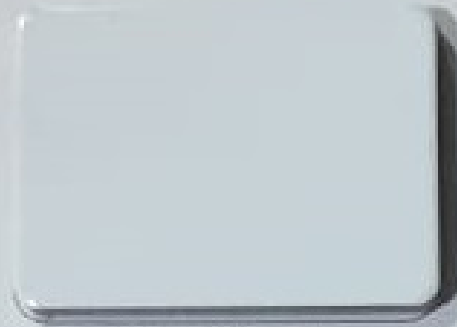


JIYU ACP JIYU ALUMINUM COMPOSITE PANEL



- ★ Recognized excellent brand in building material market of China
- ★ Green building material products of construction market of China
- ★ Ten great quality brands mostly trusted by consumers
- ★ ISO9001 International Quality Management System Certification
- ★ ISO14001 International Environment Management System Certification





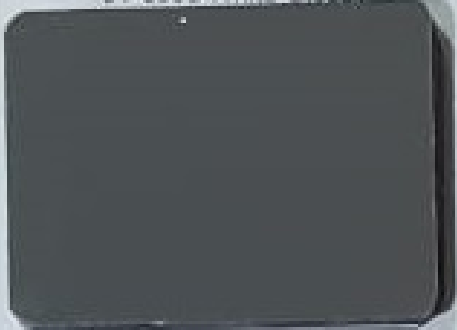
JY-6033 White Glossy



JY-6057 Amber Cream Glossy



JY-6036 China Red Glossy



JY-6054 Dark Gray Glossy



JY-6056 Black Glossy



JY-6037 Lemon Yellow Glossy



JY-6053 Orange Glossy



JY-6051 Orange Yellow Glossy



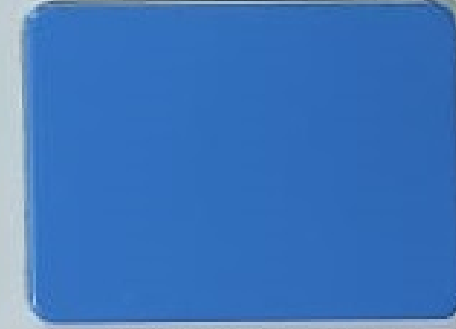
JY-6031 Red Velvet Glossy



JY-6055 Blue Glossy



JY-6035 Dark Blue Glossy



JY-6016 Sky Blue Glossy



JY-6041 Light Green Glossy



JY-6034 Apple Green Glossy



JY-6059 Police Blue Glossy Nano



CE SGS



Intertek



JY-6001 Silver Metallic



JY-6002 Silver Gray



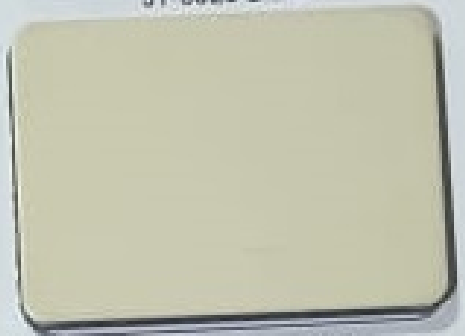
JY-6023 Black



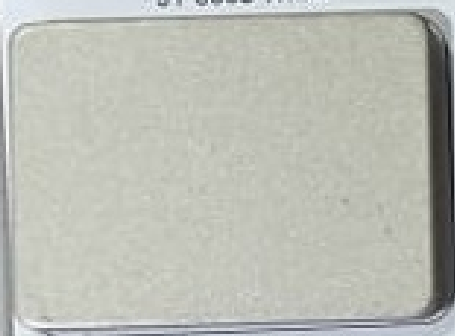
JY-6005 White



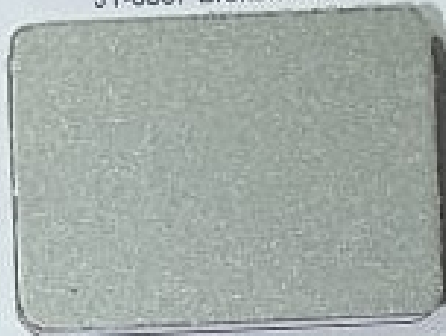
JY-6007 Broken White



JY-6006 Ivory White



JY-6003 Champagne



JY-6004 Champagne Silver



JY-6008 Jade Silver



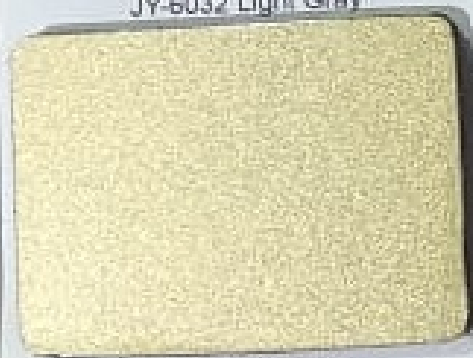
JY-6032 Light Gray



JY-6020 China Gray



JY-6021 Dark Gray



JY-6009 Golden



JY-6038 Copper



JY-6039 Coffee



JY-6012 China Red



JY-6018 Dusty Rose



JY-6017 Orange



JY-6015 Lemon Yellow



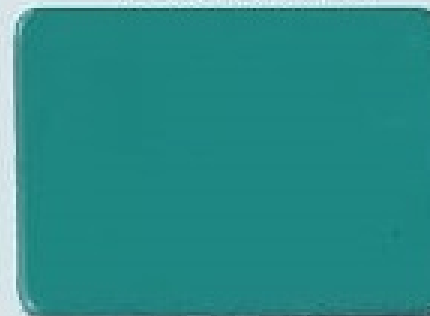
JY-6040 Dark Yellow



JY-6042 Android Green



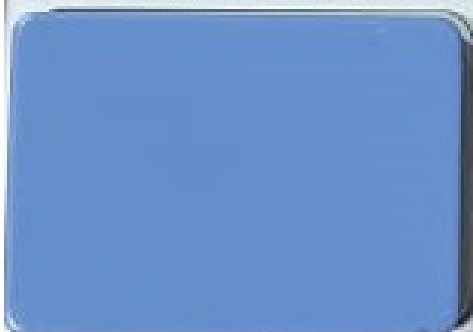
JY-6019 Postal Green



JY-6010 Sea Green



JY-6013 Jade Green



JY-6014 Light Blue



JY-6022 Blue



JY-6058 Marine Blue



JY-6011 Dark Blue



JY-6046 Silver Mirror



JY-6047 Golden Mirror



HONGKONG JIYU
INDUSTRY GROUP CO., LTD.



JY-6029 Silver Brushed



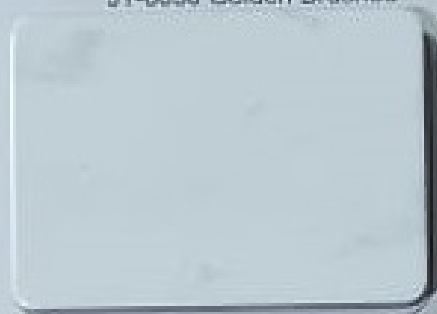
JY-6030 Golden Brushed



JY-6048 Bronze Brushed



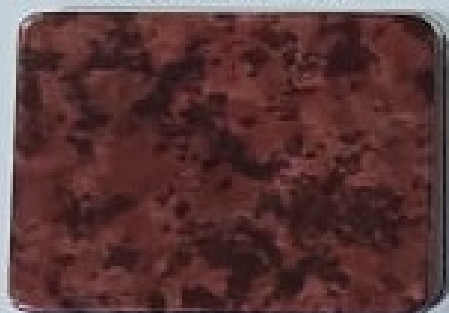
JY-6024 Tropical Granite



JY-6025 White Granite



JY 6027 Black Silver



JY-6028 Indian Granite



JY-6043 Sparkling Red



JY-6044 Sparkling Violet



JY-6052 Sparkling Purple



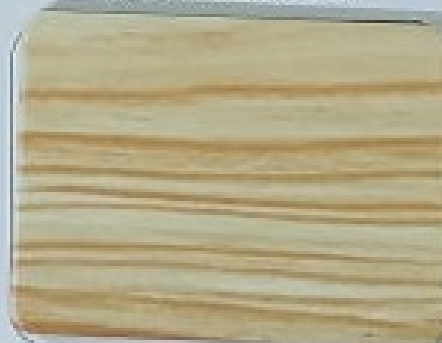
JY-6045 Metallic Brown



JY-6049 Light Wooden



JY-6050 Dark Wooden



JY-6026 Almond Wooden



JY 6052 Golden Brown



test report of exterior							
No.	test item	standard index		test value	single item determination		
		high class	qualified class				
1	appearance quality	edge	indicator	indicator	indicator	high class	
		cutting mark	not allowed	not allowed	no	high class	
		ripple	not allowed	indicator	no	high class	
		ribbing (3 times)	not allowed	< 1.0°	no	high class	
		face (3 times)	< 1.0°	< 1.00°	no	high class	
		abrasion	not allowed	total length < 100mm	no	high class	
		scratch	not allowed	total area < 50mm²	no	high class	
		total number of abrasion and scratch	not allowed	0	0	high class	
2	dimension deviation	thickness	indicator	indicator	indicator	high class	
		length	± 3mm	± 3mm	± 3mm	± 3mm	passed
		width	± 3mm	± 3mm	± 3mm	± 3mm	passed
		thickness	± 0.2mm	± 0.2mm	± 0.2mm	± 0.2mm	passed
		squareness	0.5mm	0.5mm	0.5mm	0.5mm	passed
		edge straightness	0.1mm/m	0.1mm/m	0.1mm/m	0.1mm/m	passed
		warpage	0.2mm/m	0.2mm/m	0.2mm/m	0.2mm/m	passed
3	cutting thickness	min. 0.12 ± 0.01	min. 0.12 ± 0.01	0.12 ± 0.01 average 0.12 ± 0.01	0.12 ± 0.01 average 0.12 ± 0.01	passed	
4	glass tolerance	< 10g/m² (5% tolerance)		1.8g/m² (4.2)	passed		
5	panel hardness	≥ 110		111	passed		
6	cutting flexibility	≥ 1T		1T	passed		
7	cutting adhesion	not lower than class 1		class 0	passed		
8	impact resistance	50g, no no depending on crack		50g, no no depending on crack	passed		
9	grinding resistance	≥ 5% / 10s		12.8% / 10s	passed		
10	boiling water resistance	no change		no change	passed		
11	acid resistance	no change		no change	passed		
12	alkaline resistance	no change		no change	passed		
13	oil resistance	no change		no change	passed		
14	solvent resistance	no change		no change	passed		
15	abrasion resistance	no change		no change	passed		
16	scratch resistance	no change when > 1000 times		no change when > 1000 times	passed		
17	fire density	specific value < 0.56g/m²		1.56g/m²	passed		
18	flexing strength	≥ 100MPa		104.5MPa	passed		
19	flexing elastic modulus	≥ 1.0 × 10⁴ MPa		1.02 × 10⁴ MPa	passed		
20	compression resistance	≥ 8MPa		8.88N	passed		
21	shearing strength	≥ 20MPa		20.44MPa	passed		
22	180° peel strength	≥ 1.0N/cm		0.71N/cm	passed		
23	temperature cycle resistance	no change		no change	passed		
24	thermal expansion coefficient	≤ 4.0 × 10⁻⁵ / (°C · l)		3.7 × 10⁻⁵ / (°C · l)	passed		
25	heat distortion temperature	≥ 100°C		100°C	passed		
27	artificial weathering	color difference	≤ 0.3		1.05	passed	
		degradation of glass	≤ grade 1		1 grade	passed	
		others	1 grade		1 grade	passed	

test report of interior							
NO.	test item	standard index		test value	single item determination		
		high class	qualified class				
1	appearance quality	edge	indicator	indicator	indicator	high class	
		cutting mark	not allowed	not allowed	no	high class	
		ripple	not allowed	indicator	no	high class	
		ribbing (3 times)	not allowed	< 1.0°	no	high class	
		face (3 times)	< 1.0°	< 1.00°	no	high class	
		abrasion	not allowed	total length < 100mm	no	high class	
		scratch	not allowed	total area < 50mm²	no	high class	
		total number of abrasion and scratch	not allowed	0	0	high class	
2	dimension deviation	thickness	indicator	indicator	indicator	high class	
		length	± 3mm	± 3mm	± 3mm	± 3mm	passed
		width	± 3mm	± 3mm	± 3mm	± 3mm	passed
		thickness	± 0.2mm	± 0.2mm	± 0.2mm	± 0.2mm	passed
		squareness	0.5mm	0.5mm	0.5mm	0.5mm	passed
		edge straightness	0.1mm/m	0.1mm/m	0.1mm/m	0.1mm/m	passed
		warpage	0.2mm/m	0.2mm/m	0.2mm/m	0.2mm/m	passed
3	cutting thickness	min. 0.12mm		0.12 ± 0.01 average 0.12 ± 0.01	0.12 ± 0.01 average 0.12 ± 0.01	passed	
4	glass tolerance	< 10g/m² (5%)		1.8g/m² (4.2)	passed		
5	panel hardness	≥ 110		111	passed		
6	cutting flexibility	≥ 1T		1T	passed		
7	cutting adhesion	not lower than class 1		class 0	passed		
8	impact resistance	50g, no no depending on crack		50g, no no depending on crack	passed		
9	boiling water resistance	no change		no change	passed		
10	acid resistance	no change		no change	passed		
11	alkaline resistance	no change		no change	passed		
12	oil resistance	no change		no change	passed		
13	solvent resistance	no change		no change	passed		
14	scratch resistance	no change when > 1000 times		no change when > 1000 times	passed		
15	fire density	specific value < 0.56g/m²		1.56g/m²	passed		
16	flexing strength	≥ 100MPa		104.5MPa	passed		
17	flexing elastic modulus	≥ 1.0 × 10⁴ MPa		1.02 × 10⁴ MPa	passed		
18	compression resistance	≥ 8MPa		8.88N	passed		
19	shearing strength	≥ 20MPa		20.44MPa	passed		
20	180° peel strength	≥ 1.0N/cm		0.71N/cm	passed		
21	temperature difference resistance	no change		no change	passed		
22	thermal expansion coefficient	≤ 4.0 × 10⁻⁵ / (°C · l)		3.7 × 10⁻⁵ / (°C · l)	passed		
23	heat distortion temperature	≥ 100°C		100°C	passed		